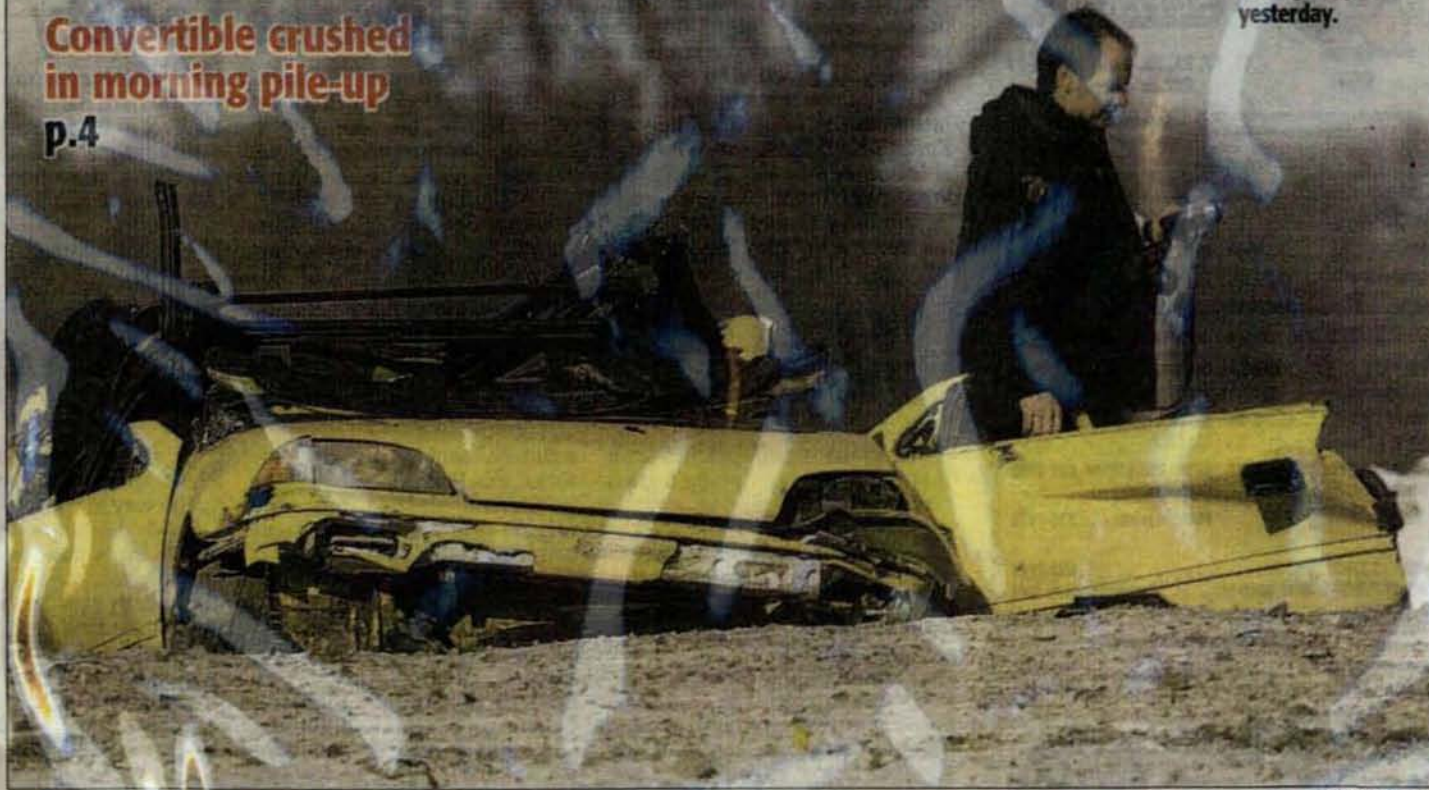


Woman killed

Convertible crushed
in morning pile-up

p.4

An RCMP officer
investigates at
the scene of a
fatal collision
on Highway 59
yesterday.



C. PROCAYLO Sun



C. PROCAYLO Sun

An RCMP officer photographs the wreckage of a 1991 Chevrolet Sprint that police say was hit by a 1995 Dodge Dakota truck on southbound Highway 59 north of the Perimeter Highway yesterday.

Fatal rear-end collision

Woman killed after being slammed by truck

DEAN PRITCHARD

Staff Reporter

dpritchard@wpgsun.com

One woman was killed and another woman was sent to hospital with non-life threatening injuries following a three vehicle collision yesterday morning on Highway 59, just north of the Perimeter Highway.

The pile-up occurred in the southbound lane of Highway 59 around 7 a.m.

Stopped at lights

An investigation by East St. Paul police determined a 1995 Dodge Dakota truck crashed into the back of a 1991 Chevrolet Sprint convertible that was stopped at the traffic lights.

The impact pushed the convertible into the rear of a 2000 Hyundai car, which was also stopped at the lights.

The 40-year-old driver of the Sprint was taken to Concordia Hospital, where police say she was pronounced dead.

Cops wouldn't release the victim's name at the request of the family.

The driver of the Hyundai was also taken to hospital, where she was treated and released. The man driving the Dodge Dakota was uninjured.

Southbound traffic was re-routed around

the accident scene for hours as investigators went over a 100-metre long area where the wreck occurred.

Roof torn away

The convertible in the middle of the southbound lane was a tangled wreck of yellow metal, its roof torn away.

A dozen metres ahead, the Hyundai had crashed into a light standard and the Dodge truck was knocked into the ditch.

The pile-up was one of two multi-vehicle collisions along the city's outskirts yesterday

morning.

Icy road conditions were believed to have been a factor in both accidents.

A man was sent to hospital with minor injuries following a three-vehicle collision at 8:30 a.m. at Portage Avenue and the Perimeter Highway.

Police said a vehicle was crossing the Assiniboine Bridge when it hit a patch of ice, spun around, and was hit by a second vehicle.

A third vehicle, attempting to avoid a collision, went off the road and hit the side of the bridge.